

# KING

## HOME 910 N



2BD.19

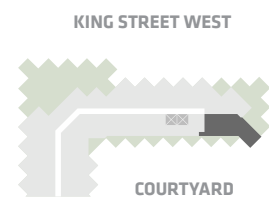
**2 Bedroom + Study  
2 Bathroom**

**Total Living:  
1237 ft<sup>2</sup>**

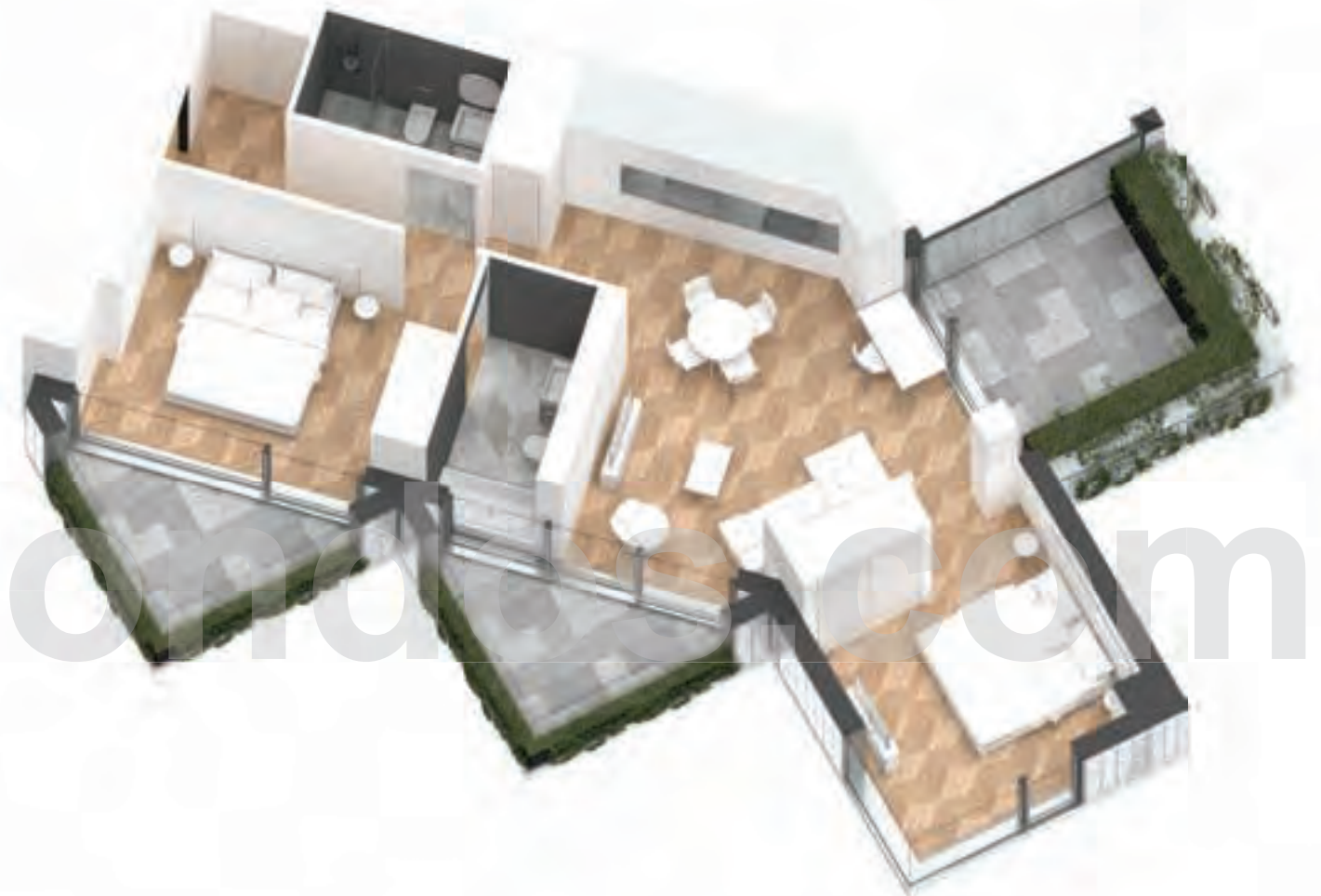
Interior Living:  
917 ft<sup>2</sup>

Exterior Living:  
320 ft<sup>2</sup>

<b>LIVING</b>	13' 4" X 9' 2"
<b>DINING</b>	13' 0" X 6' 8"
<b>MASTER BD</b>	12' 0" X 8' 11"
<b>BEDROOM 2</b>	11' 10" X 11' 4"
<b>BALCONY</b>	13' 0" X 7' 9"
<b>TERRACE</b>	9' 1" X 9' 1"



**NORTH MOUNTAIN KEYPLAN**



All dimensions and specifications are approximate. Certain plans are reverse or mirror image. Balcony square footages are estimated and may vary from that stated. Please see Sales Representative for details. Furniture not included. Refer to key plan for unit location and orientation. E. & O.E.